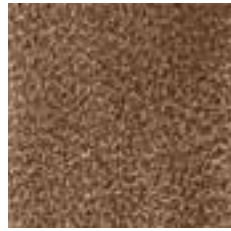


TESSUTI

Fabric



HUNTER.2



HUNTER.5



HUNTER.6



HUNTER.20



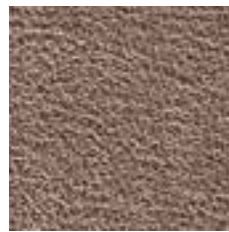
HUNTER.27



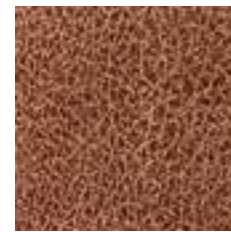
HUNTER.80



HUNTER.101



HUNTER.102



HUNTER.800



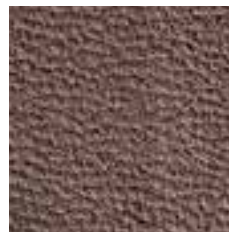
HUNTER.2050



HUNTER.2100



HUNTER.5040



HUNTER.9710

CARATTERISTICHE TECNICHE - TECHNICAL DATA

Composizione - Composition

Altezza - Height

Peso - Weight

Lavaggio - Washing

Solidità luce - Fastness to light

Resistenza pilling - Pill resistance

Solidità colori allo sfregamento - Color fastness

Martindale - Martindale

100% PL - supporto 100% PL - (support 100% PL)

142 cm.

777 gr./mtl.

30° acqua - 30° water

4/5

4/5

Asciutto 4/8 umido 4/5 - (today 4/8 towet 4/5)

40.000 giri - 40,000 turns

PULIZIA E MANUTENZIONE - CLEANING AND CARING





M1508.4



M1508.5



M1508.10



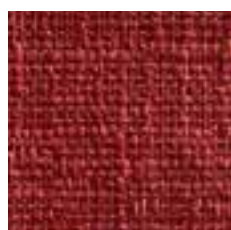
M1508.11



M1508.13



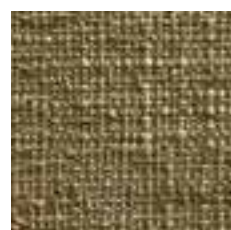
M1508.14



M1508.15



M1508.16



M1508.17



M1508.18



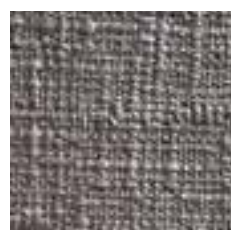
M1508.21



M1508.22



M1508.25



M1508.27

CARATTERISTICHE TECNICHE - TECHNICAL DATA

Composizione - Composition

Altezza - Height

Peso - Weight

Lavaggio - Washing

Solidità luce - Fastness to light

Resistenza pilling - Pill resistance

Restringimento - Shrinkage capacity

Martindale - Martindale

43% VI - 24% PL - 21% LI - 12% CO

140 cm.

630 gr./mtl.

30° acqua - 30° water

> 4

4

Trama 1,5% ordito 1,5% - Weave 1,5% warp 1,5%

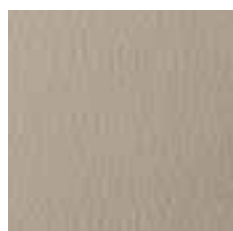
18.000 giri - 18.000 turn

PULIZIA E MANUTENZIONE - CLEANING AND CARING





M1539.02



M1539.05



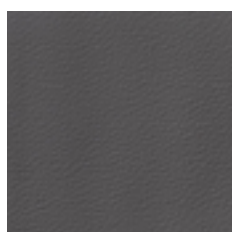
M1539.06



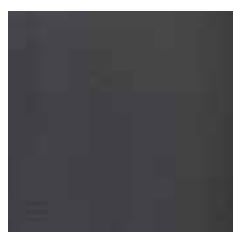
M1539.07



M1539.09



M1539.10



M1539.11



M1539.14



M1539.17



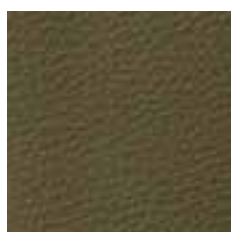
M1539.18



M1539.19



M1539.24



M1539.28



M1539.33

CARATTERISTICHE TECNICHE - TECHNICAL DATA**Composizione** - Composition

71% PVC - 6%PU - 14%CO - 9%PES

Altezza - Height

140 cm.

Peso - Weight

660 gr./mtl.

Lavaggio - Washing

30° acqua - 30° water

Solidità luce - Fastness to light

6/7

Martindale - Martindalesecco oltre 51.000 giri - dry over 51.000 turn
umido oltre 25.000 giri - wet over 25.000 turn**Ignifugo** - Fireproof

Classe 1 - class 1

PULIZIA E MANUTENZIONE - CLEANING AND CARING



M8833.1



M8833.4



M8833.5



M8833.6



M8833.7



M8833.9



M8833.10



M8833.15



M8833.16



M8833.19



M8833.20



M8833.23



M8833.24



M8833.27

CARATTERISTICHE TECNICHE - TECHNICAL DATA**Composizione** - Composition

100% PL

Altezza - Height

140 cm.

Peso - Weight

480 gr./mtl.

Lavaggio - WashingA mano (*hand washing*)**Solidità luce** - Fastness to light

4

Resistenza pilling - Pill resistance

4

Solidità colori allo sfregamento - Color fastnessAsciutto 4/5 umido 4/5 - (*todry 4/5 towet 4/5*)**Martindale** - Martindale

33.000 giri - 33,000 turns

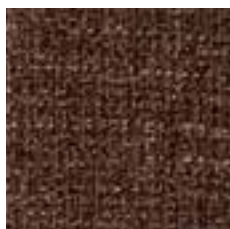
PULIZIA E MANUTENZIONE - CLEANING AND CARING



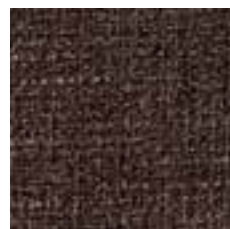
M8068.2



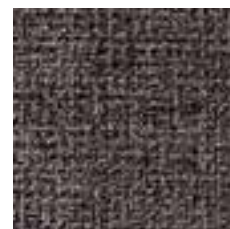
M8068.4



M8068.5



M8068.6



M8068.9



M8068.10



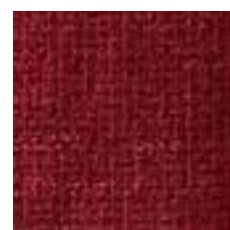
M8068.11



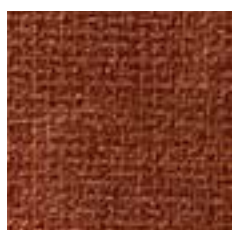
M8068.13



M8068.14



M8068.18



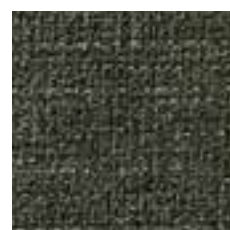
M8068.19



M8068.21



M8068.23



M8068.24

CARATTERISTICHE TECNICHE - TECHNICAL DATA

Composizione - Composition

Altezza - Height

Peso - Weight

Lavaggio - Washing

Solidità luce - Fasteness to light

Resistenza pilling - Pill resistance

Martindale - Martindale

100% PES

140 cm.

525 gr./mtl.

30° acqua a secco - 30° water dry washing
4

3/4

30.000 giri - 33,000 turns

PULIZIA E MANUTENZIONE - CLEANING AND CARING





M8074.2



M8074.3



M8074.4



M8074.5



M8074.6



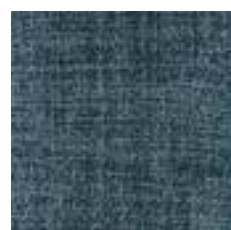
M8074.7



M8074.9



M8074.10



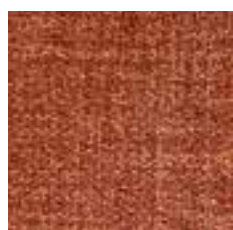
M8074.11



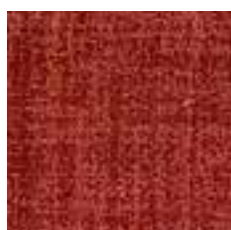
M8074.13



M8074.14



M8074.16



M8074.17



M8074.18

CARATTERISTICHE TECNICHE - TECHNICAL DATA

Composizione - Composition

100% PL

Altezza - Height

140 cm.

Peso - Weight

450 gr./mtl.

Lavaggio - Washing

30° acqua - 30° water

Solidità luce - Fastness to light

4/5

Resistenza pilling - Pill resistance

4/5

Martindale - Martindale

100.000 giri - 100,000 turns

Trattamento antimacchia - Stain resistant

PULIZIA E MANUTENZIONE - CLEANING AND CARING





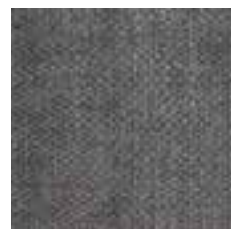
M8075.1



M8075.2



M8075.3



M8075.4



M8075.5



M8075.6



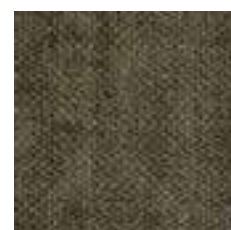
M8075.7



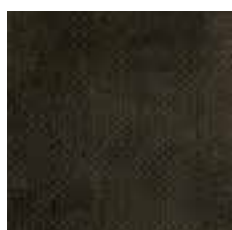
M8075.8



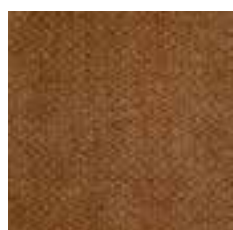
M8075.9



M8075.10



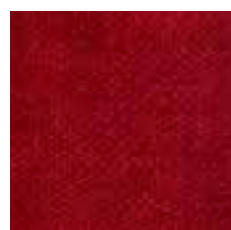
M8075.11



M8075.12



M8075.14



M8075.15

CARATTERISTICHE TECNICHE - TECHNICAL DATA

Composizione - Composition

100% PL

Altezza - Height

140 cm.

Peso - Weight

560 gr./mtl.

Lavaggio - Washing

30° acqua - 30° water

Solidità luce - Fastness to light

4/5

Resistenza pilling - Pill resistance

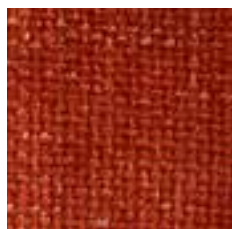
4/5

Martindale - Martindale

90.000 giri - 90,000 turns

PULIZIA E MANUTENZIONE - CLEANING AND CARING





TRENDY.6



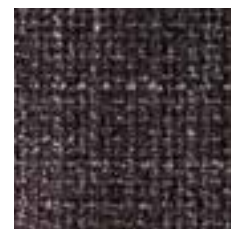
TRENDY.10



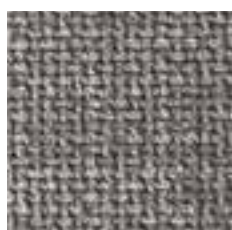
TRENDY.12



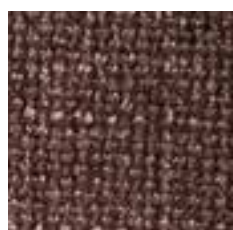
TRENDY.14



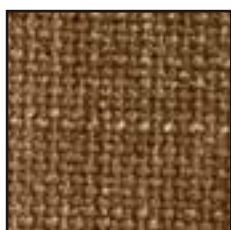
TRENDY.18



TRENDY.27



TRENDY.100



TRENDY.102



TRENDY.130



TRENDY.200



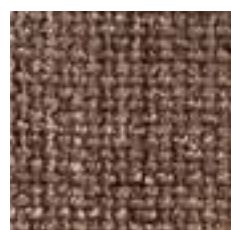
TRENDY.204



TRENDY.616



TRENDY.617



TRENDY.622

CARATTERISTICHE TECNICHE - TECHNICAL DATA

Composizione - Composition

Altezza - Height

Peso - Weight

Lavaggio - Washing

Solidità luce - Fastness to light

Resistenza pilling - Pill resistance

Martindale - Martindale

100% PL

140 cm.

610 gr./mtl.

30° acqua - 30° water

4/5

4/5

100.000 giri - 33,000 turns

PULIZIA E MANUTENZIONE - CLEANING AND CARING

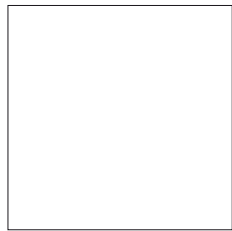


FINITURE

Finishes

Laccati

Laquers



300
BIANCO



302
BANANA



337
AURORA



304
SENAPE



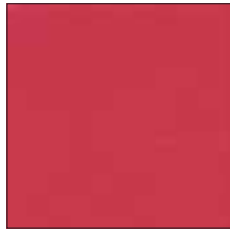
305
ORZO



306
MANDARINO



307
GINGER



336
CORALLO



308
TULIPANO



309
AMARENA



310
PETALO



311
FUCSIA



335
LAVANDA



323
INDACO



312
VINACCIA



324
CIELO



332
ATLANTICO



316
PAVONE



317
CIANO



318
OCEANO



319
OLTREMARE



313
MELA



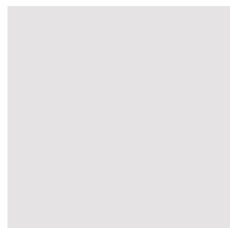
315
BAMBÙ



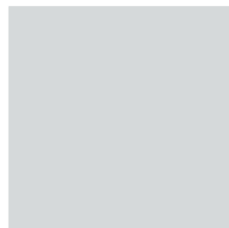
314
KIWI



330
SALVIA



333
PLATINO



331
POLVERE



325
CANAPA



326
SABBIA



334
ANTIMONIO



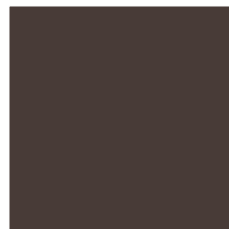
327
POMICE



320
OMBRA



328
CACAO



321
CAFFÈ



329
GRAFFITE



322
LAVAGNA

Laccature con vernici all'acqua, autorigeneranti e con un basso livello di emissioni di sostanze nocive. (Disponibili sia in versione opaca, sia in versione lucida).

Water based laquers (Available in Matte or High Gloss).

Laminati

Laminates



M006
BIANCO



M004
LARICE



M008
ROVERE NATURALE



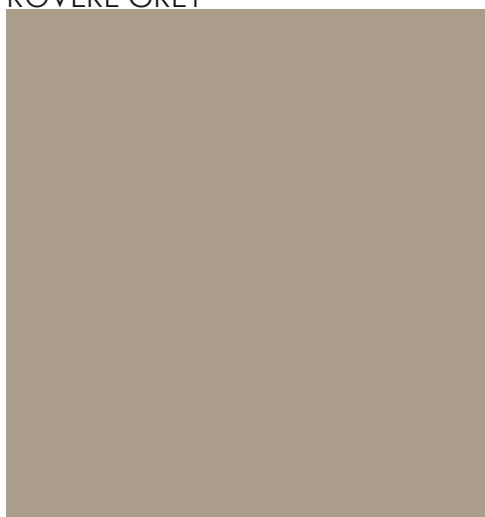
M005
ROVERE GREY



M003
FRASSINO BIANCO



M007
OLMO



M009
TORTORA



M010
NOCE

Pannelli di alta qualità ricavati da materiali riciclati nel rispetto dell'ambiente e delle più restrittive norme CARB in vigore.

High quality panels processed in accordance to strict CARB regulations.

Essenze

Wood Veneers



E001
FRASSINO TABACCO



E002
FRASSINO BROWN



E011
FRASSINO



E012
FRASSINO



E013
ROVERE



E014
NOCE CANALETTO

Impiallacciato di vero legno selezionato accuratamente nel pieno rispetto della natura e dell'ambiente.

Wood veneers selection.