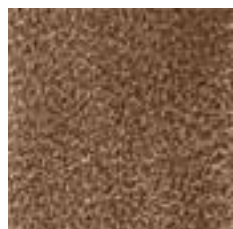


TESSUTI

Fabric



HUNTER.2



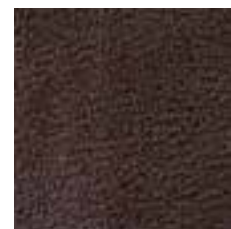
HUNTER.5



HUNTER.6



HUNTER.20



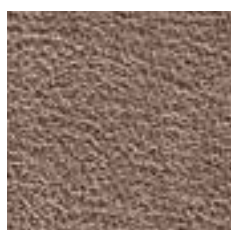
HUNTER.27



HUNTER.80



HUNTER.101



HUNTER.102



HUNTER.800



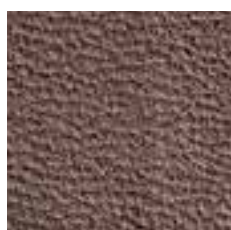
HUNTER.2050



HUNTER.2100



HUNTER.5040



HUNTER.9710

CARATTERISTICHE TECNICHE - TECHNICAL DATA

Composizione - Composition

Altezza - Height

Peso - Weight

Lavaggio - Washing

Solidità luce - Fastness to light

Resistenza pilling - Pill resistance

Solidità colori allo sfregamento - Color fastness

Martindale - Martindale

100% PL - supporto 100% PL - (support 100% PL)

142 cm.

777 gr./mtl.

30° acqua - 30° water

4/5

4/5

Asciutto 4/8 umido 4/5 - (todry 4/8 towet 4/5)

40.000 giri - 40,000 turns

PULIZIA E MANUTENZIONE - CLEANING AND CARING





M1508.4



M1508.5



M1508.10



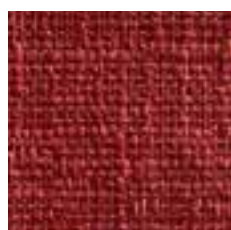
M1508.11



M1508.13



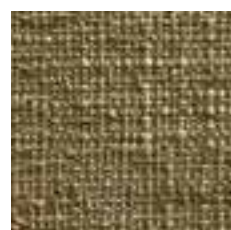
M1508.14



M1508.15



M1508.16



M1508.17



M1508.18



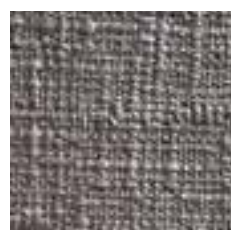
M1508.21



M1508.22



M1508.25



M1508.27

CARATTERISTICHE TECNICHE - TECHNICAL DATA

Composizione - Composition

Altezza - Height

Peso - Weight

Lavaggio - Washing

Solidità luce - Fastness to light

Resistenza pilling - Pill resistance

Restringimento - Shrinkage capacity

Martindale - Martindale

43% VI - 24% PL - 21% LI - 12% CO

140 cm.

630 gr./mtl.

30° acqua - 30° water

> 4

4

Trama 1,5% ordito 1,5% - Weave 1,5% warp 1,5%

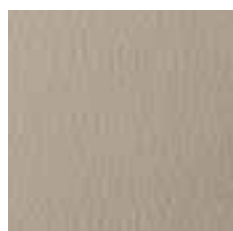
18.000 giri - 18.000 turn

PULIZIA E MANUTENZIONE - CLEANING AND CARING





M1539.02



M1539.05



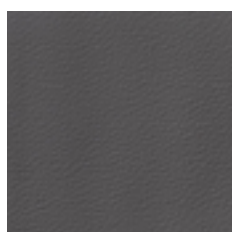
M1539.06



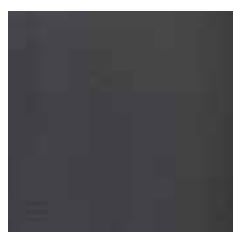
M1539.07



M1539.09



M1539.10



M1539.11



M1539.14



M1539.17



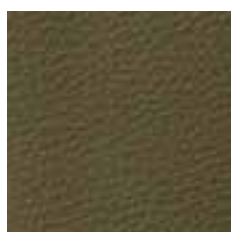
M1539.18



M1539.19



M1539.24



M1539.28



M1539.33

CARATTERISTICHE TECNICHE - TECHNICAL DATA**Composizione** - Composition

71% PVC - 6%PU - 14%CO - 9%PES

Altezza - Height

140 cm.

Peso - Weight

660 gr./mtl.

Lavaggio - Washing

30° acqua - 30° water

Solidità luce - Fastness to light

6/7

Martindale - Martindalesecco oltre 51.000 giri - dry over 51.000 turn
umido oltre 25.000 giri - wet over 25.000 turn**Ignifugo** - Fireproof

Classe 1 - class 1

PULIZIA E MANUTENZIONE - CLEANING AND CARING



M8833.1



M8833.4



M8833.5



M8833.6



M8833.7



M8833.9



M8833.10



M8833.15



M8833.16



M8833.19



M8833.20



M8833.23



M8833.24



M8833.27

CARATTERISTICHE TECNICHE - TECHNICAL DATA**Composizione** - Composition

100% PL

Altezza - Height

140 cm.

Peso - Weight

480 gr./mtl.

Lavaggio - WashingA mano (*hand washing*)**Solidità luce** - Fastness to light

4

Resistenza pilling - Pill resistance

4

Solidità colori allo sfregamento - Color fastnessAsciutto 4/5 umido 4/5 - (*todry 4/5 towet 4/5*)**Martindale** - Martindale

33.000 giri - 33,000 turns

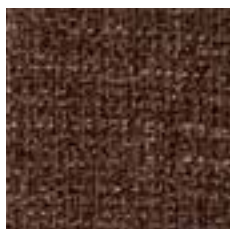
PULIZIA E MANUTENZIONE - CLEANING AND CARING



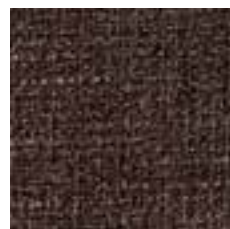
M8068.2



M8068.4



M8068.5



M8068.6



M8068.9



M8068.10



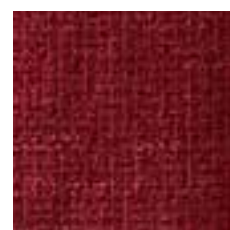
M8068.11



M8068.13



M8068.14



M8068.18



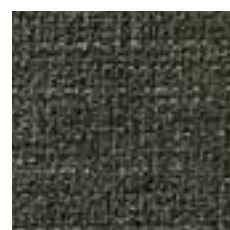
M8068.19



M8068.21



M8068.23



M8068.24

CARATTERISTICHE TECNICHE - TECHNICAL DATA

Composizione - Composition

Altezza - Height

Peso - Weight

Lavaggio - Washing

Solidità luce - Fastness to light

Resistenza pilling - Pill resistance

Martindale - Martindale

100% PES

140 cm.

525 gr./mtl.

30° acqua a secco - 30° water dry washing
4

3/4

30.000 giri - 33,000 turns

PULIZIA E MANUTENZIONE - CLEANING AND CARING





M8074.2



M8074.3



M8074.4



M8074.5



M8074.6



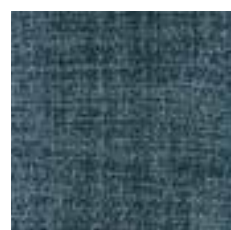
M8074.7



M8074.9



M8074.10



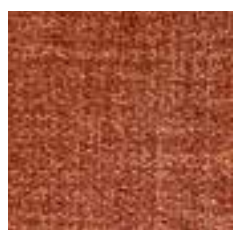
M8074.11



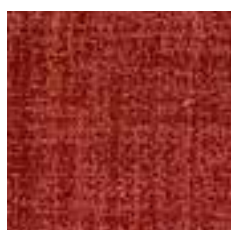
M8074.13



M8074.14



M8074.16



M8074.17



M8074.18

CARATTERISTICHE TECNICHE - TECHNICAL DATA

Composizione - Composition

100% PL

Altezza - Height

140 cm.

Peso - Weight

450 gr./mtl.

Lavaggio - Washing

30° acqua - 30° water

Solidità luce - Fastness to light

4/5

Resistenza pilling - Pill resistance

4/5

Martindale - Martindale

100.000 giri - 100,000 turns

Trattamento antimacchia - Stain resistant

PULIZIA E MANUTENZIONE - CLEANING AND CARING





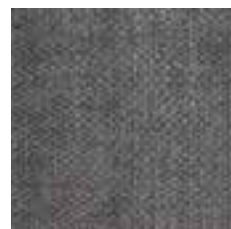
M8075.1



M8075.2



M8075.3



M8075.4



M8075.5



M8075.6



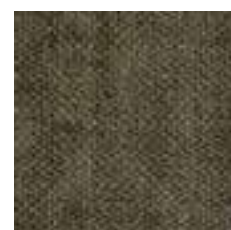
M8075.7



M8075.8



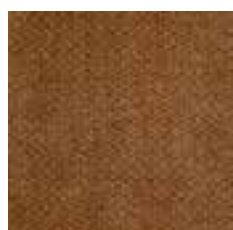
M8075.9



M8075.10



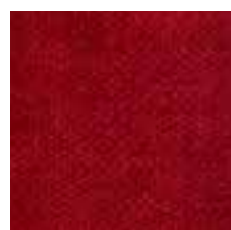
M8075.11



M8075.12



M8075.14



M8075.15

CARATTERISTICHE TECNICHE - TECHNICAL DATA

Composizione - Composition

100% PL

Altezza - Height

140 cm.

Peso - Weight

560 gr./mtl.

Lavaggio - Washing

30° acqua - 30° water

Solidità luce - Fastness to light

4/5

Resistenza pilling - Pill resistance

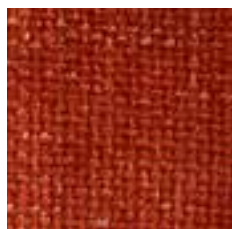
4/5

Martindale - Martindale

90.000 giri - 90,000 turns

PULIZIA E MANUTENZIONE - CLEANING AND CARING





TRENDY.6



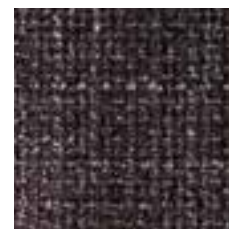
TRENDY.10



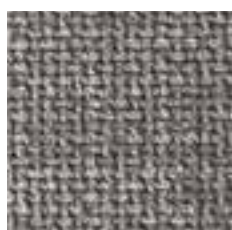
TRENDY.12



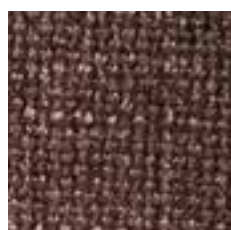
TRENDY.14



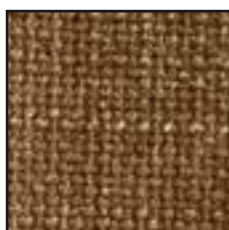
TRENDY.18



TRENDY.27



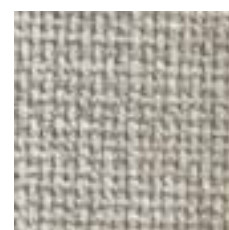
TRENDY.100



TRENDY.102



TRENDY.130



TRENDY.200



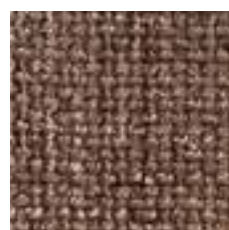
TRENDY.204



TRENDY.616



TRENDY.617



TRENDY.622

CARATTERISTICHE TECNICHE - TECHNICAL DATA

Composizione - Composition

100% PL

Altezza - Height

140 cm.

Peso - Weight

610 gr./mtl.

Lavaggio - Washing

30° acqua - 30° water

Solidità luce - Fastness to light

4/5

Resistenza pilling - Pill resistance

4/5

Martindale - Martindale

100.000 giri - 33,000 turns

PULIZIA E MANUTENZIONE - CLEANING AND CARING

